

CHAMOT

重组人（哺乳动物细胞表达）高迁移率族蛋白B1 /Recombinant HMGB1, Human, Animal-Free

CM175-5HP

CM175-20HP

CM175-100HP

CM175-500HP

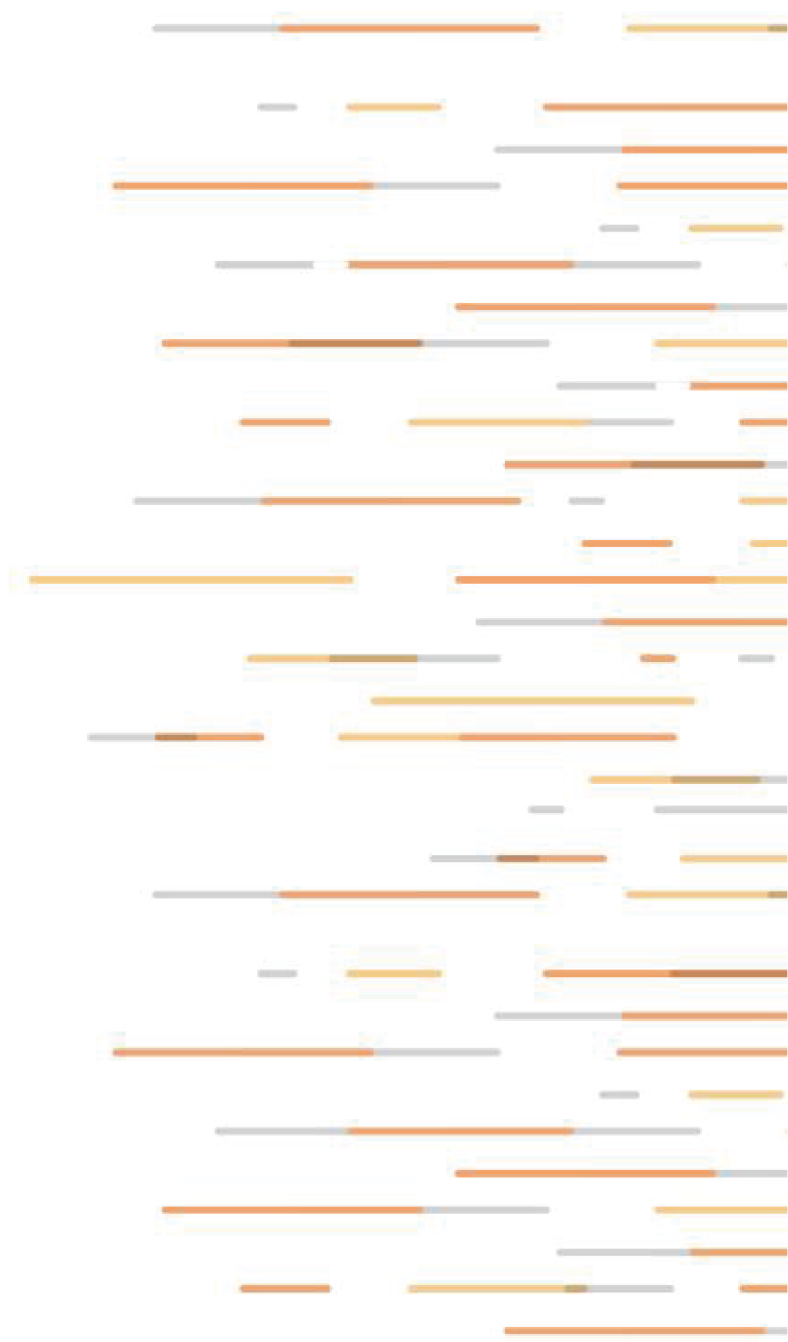
CM175-1000HP



CHAMOT

乔默®生物

Specialize In Cytokines



CONTENT

1 产品简介

2 产品储存/运输

3 产品使用

4 实验数据展示

重组人（哺乳动物细胞表达）高迁移率族蛋白B1 /Recombinant HMGB1, Human, Animal-Free

| 产品编号 | 规格 |
|--------------|--------|
| CM175-5HP | 5 ug |
| CM175-20HP | 20 ug |
| CM175-100HP | 100 ug |
| CM175-500HP | 500 ug |
| CM175-1000HP | 1 mg |

产品简介

背景描述 High mobility group protein B1 protein (HMGB1) is the high mobility group box family of non-histone chromosomal proteins. Human HMGB1 is expressed as a 25 kDa single chain polypeptide containing three domains: two N-terminal HMG boxes A and B, and a negatively charged 30 a.a. C-terminal region that contains only Asp and Glu. Post-translational modification on HMGB1 have been reported, affects its localization, receptor interactions, and function. HMGB1, with a disulfide bond between C23 and C45, have been reported that cause cytokine production and the activation of NF-κB. Otherwise, the fully oxidized form has no immune function, losing its proinflammatory effect and the apoptotic cell death activation function.

别称 high mobility group box 1, HMG-1, HMG1, HMG3, SBP-1

蛋白编码 P09429

分子量 The protein has a calculated MW of 36.42 kDa. The protein migrates as 35-48 kDa under reducing condition (SDS-PAGE analysis).

表达系统 HEK293

纯度 >98% as determined by SDS-PAGE.

生物活性 Measure by its ability to induce TNF alpha in RAW264.7 cells. The ED₅₀ for this effect is <10 µg/mL.

内毒素检测 <0.1 EU per 1 µg of the protein by the LAL method.

蛋白序列 MGKGDPKKPRGKMSSYAFFVQTCREEHKKKHPDASVNFSEFSKKCSERWKTMSAKEKGKFEDMAKADKARY EREMPTYIPPKGETKKKFKD PNAPKRPPSAFFLFCSEYRPKIKGEHPGLSIGDVAKKLGEMWNNTAADDKQPYEKKA AKLKEKYEKDIAAYRA KGKPDAAKKGVVKA ESKK KKEEEDEEDEDEDEDEDEDEDEDEDEDEDEDDDE with polyhistidine-SUMO tag at the N-terminus

产品形式 The protein was lyophilized from a 0.2 µm filtered solution containing 1X PBS, pH 7.4. If you have any concerns or special requirements, please confirm with us.

产品应用 Cell Culture

产品储存/运输

储存

Lyophilized protein should be stored at -20°C for 1 year. Upon reconstitution, store at 2°C to 8°C for up to 1 week. Further dilute in a buffer containing a carrier protein or stabilizer (e.g. 0.1% BSA, 10%FBS, 5%HSA or 5% trehalose solution), protein aliquots should be stored at -20°C or -80°C for 3-6 months. Avoid repeated freeze/thaw cycles.

运输

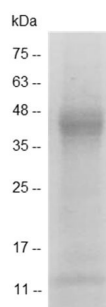
Blue Ice

产品使用

Centrifuge at 3000 rpm for 5 mins before opening. It is recommended to reconstitute the lyophilized protein in sterile H₂O to a concentration not less than 100 µg/mL and incubate the stock solution at room temperature for at least 20 mins to ensure sufficient re-dissolved. Do Not Vortex! Vigorous shaking may impair the biological activity of the protein.

实验数据展示

>



SDS- PAGE analysis of recombinant human HMGB1

For Research Use or Further Manufacturing Only

Chamot Biotechnology(Shanghai) Co., Ltd. www.chamot-bio.com

Tel: 021-51880030 Mail: info@chamot-bio.com QQ: 864920491