

CHAMOT

重组人白细胞介素1 beta / Recombinant IL-1
beta, Human, GMP

CM002-100HPG

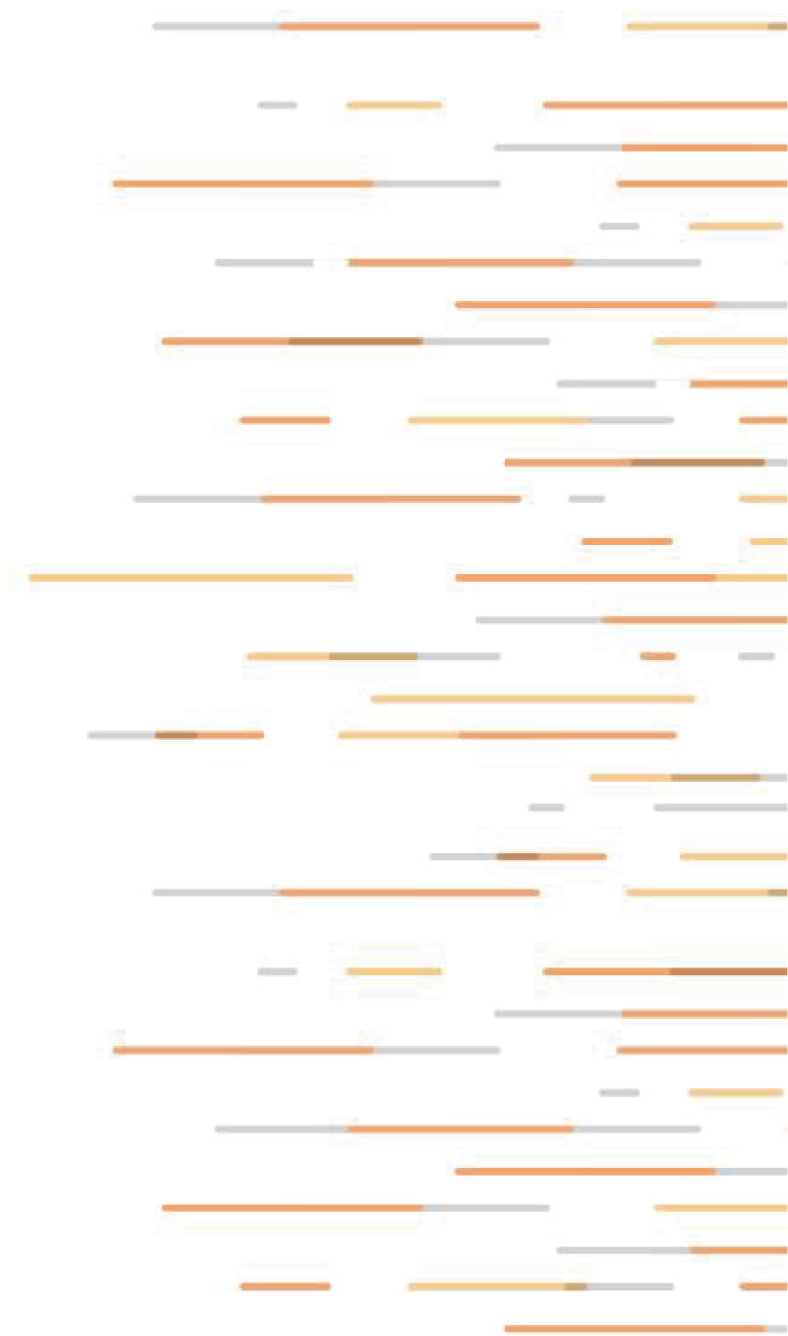
CM002-1000HPG



CHAMOT

乔默®生物

Specialize In Cytokines



CONTENT

1 产品简介

2 产品使用

3 产品储存/运输

4 实验数据展示

重组人白细胞介素1 beta / Recombinant IL-1 beta, Human, GMP

产品编号	规格
CM002-100HPG	100 ug
CM002-1000HPG	1 mg

产品简介

背景描述

Interleukin-1 beta (IL-1 β) is a major cytokine expressed in macrophage, NK cells, monocytes, and neutrophils. It also plays fundamental role in inflammatory response, including monocyte activation, which is essential for the host defense and pathogen and pathogen resistance. Pro-IL-1 β is cleaved by cytosolic caspase 1 to form mature IL-1 β .

别称

interleukin 1 beta, Catabolin, Lymphocyte-Activating Factor (LAF), Endogenous Pyrogen (EP), Leukocyte Endoge_x005f_x005f_x005f?nous Mediator (LEM), Mononuclear Cell Factor (MCF), IL1, IL1B

蛋白编码

P01584

分子量

The protein has a calculated MW of 18.5 kDa. The protein migrates as 17 kDa under reducing condition (SDS-PAGE analysis).

表达系统

Escherichia coli

纯度

>97% as determined by SDS-PAGE analysis.

生物活性

Measure by its ability to induce IL-8 secretion in HT29 cells. The ED₅₀ for this effect is <2.0 ng/mL. The specific activity of recombinant human IL-1 GMP beta is approximately > 5 x 10⁷ IU/mg, which is calibrated against the human IL-1 beta WHO International Standard (NIBSC code: 86/680).

内毒素检测

<0.05 EU per 1 μ g of the protein by the LAL method.

蛋白序列

MASAPVRSLNCTLRDSQQKSLVMSGPYELKALHLQGQDMEQQVVFSMSFVQGEESNDKIPVALGLKEKNLYLS
CVLKDDKPTLQLESVDPNYPKKKMEKRFVFNKIEINNKLFEFESAQFPNWIYSTQAENMPVFLGGTKGGQDIT
DFTMQFVSS with polyhistidine tag at the C-terminus.

支原体

Not detected

产品形式

Lyophilized from a 0.2 μ m filtered solution of PBS, pH 8.0.

产品应用

Cell Culture

产品使用

Centrifuge at 3000 rpm for 5 mins before opening. It is recommended to reconstitute the lyophilized protein in sterile H₂O to a concentration not less than 0.5 mg/mL and incubate the stock solution at RT for at least 20 min to ensure sufficient re-dissolved. Do Not Vortex! Vigorous shaking may impair the biological activity of the protein.

产品储存/运输

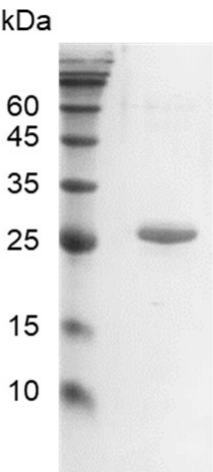
储存

Lyophilized protein should be stored at -20°C for 1 year. Upon reconstitution, store at 2°C to 8°C for up to 1 week. Further dilute in a buffer containing a carrier protein or stabilizer (e.g. 0.1% BSA, 10%FBS, 5%HSA or 5% trehalose solution), protein aliquots should be stored at -20°C or -80°C for 3-6 months. Avoid repeated freeze/thaw cycles.

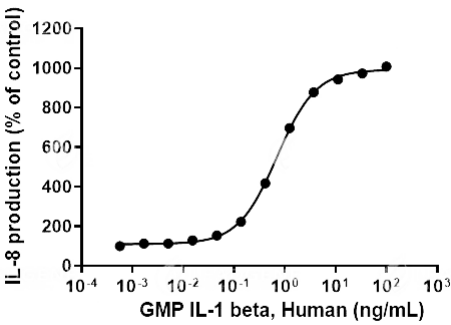
运输

Blue Ice

实验数据展示



SDS- PAGE analysis of GMP human IL-1 beta



GMP Human IL-1 beta Protein, His Tag, E. coli induces IL-8 secretion in HT29 cells, with the ED₅₀ < 2.0 ng/mL.