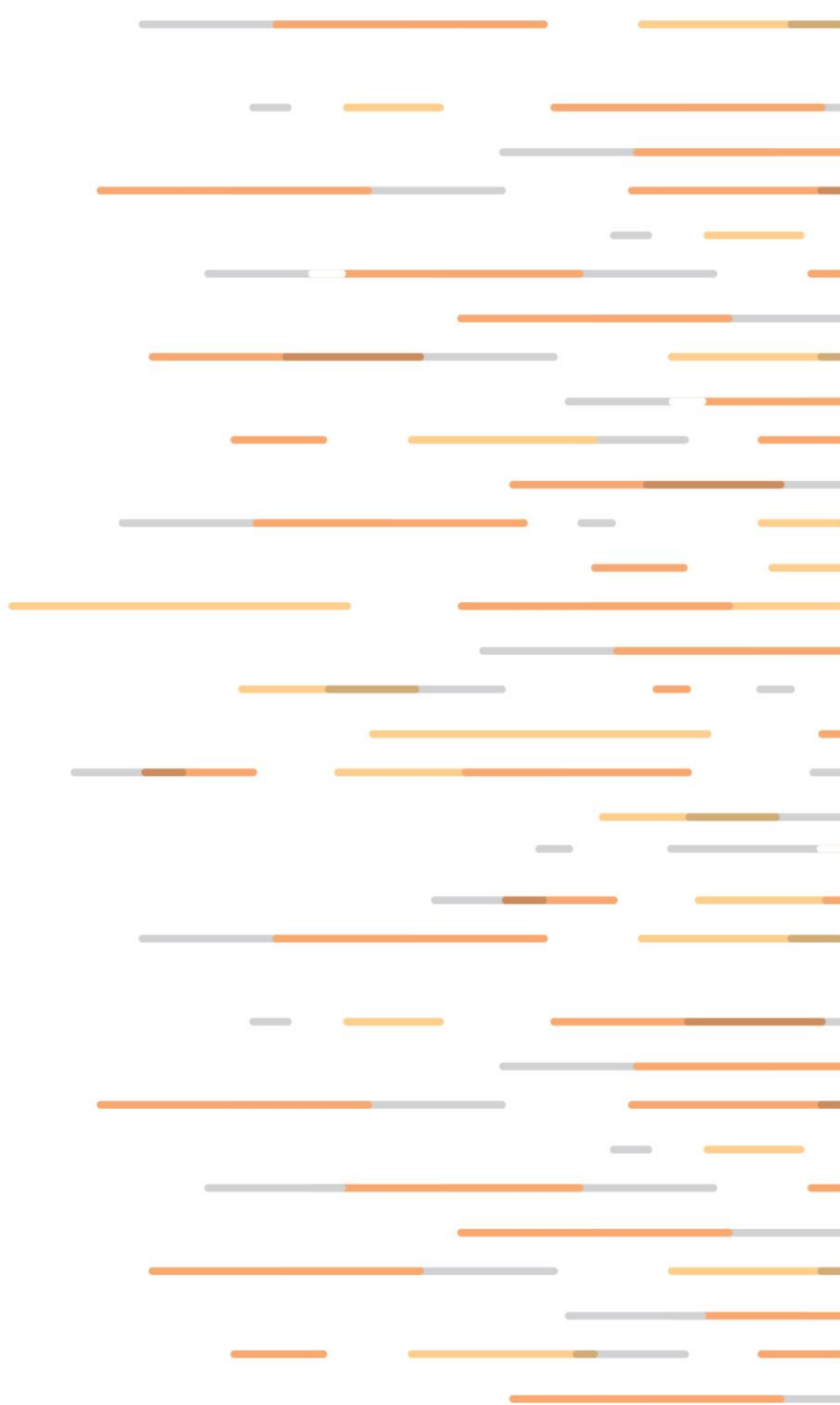


CHAMOT

Mouse anti-SARS-CoV-2 Spike mAb, Clone LGSV201

CM003-0.1A1CoV



CHAMOT

喬默生物技術(上海)有限公司
CHAMOT BIOTECHNOLOGY CO., LTD.

CONTENT

1 产品简介

2 产品储存

3 产品组成

4 产品应用

Mouse anti-SARS-CoV-2 Spike mAb, Clone LGSV201

编号	CM003-0.1A1CoV	More	规格	100 µg	More
类别	一抗		应用	ELISA/WB/IFA/ FACS	

产品简介

产品描述: 该单克隆抗体衍生自 SARS-CoV-2 VLP 免疫小鼠。冠状病毒刺突蛋白进行与细胞受体和膜融合相互作用的过程,使病毒进入靶细胞。Spike 蛋白还可以用于定义病毒的特异性,并用作疫苗设计的关键靶标。可以在病毒感染的细胞和细胞培养基中检测到糖基化的 Spike 蛋白。RBD 负责识别细胞表面受体。

类型:	单克隆抗体
克隆号	LGSV201
浓度:	1 mg/mL
免疫原:	SARS-CoV-2 VLP
宿主:	Mouse
反应种属:	SARS-CoV-2
偶联标记:	N/A
同型对照:	IgG1 kappa
纯度:	>98% (SDS-PAGE)
物理状态	液体

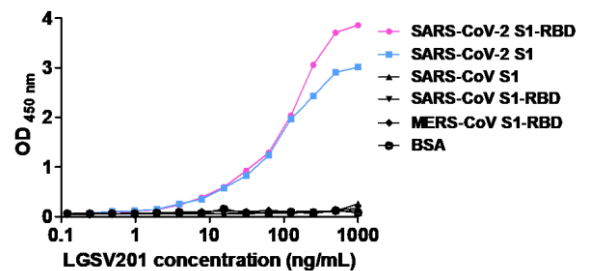
产品储存

储存:	4°C保存六个月; -20°C可长期保存, 避免反复冻融。
运输:	蓝冰。

产品组成

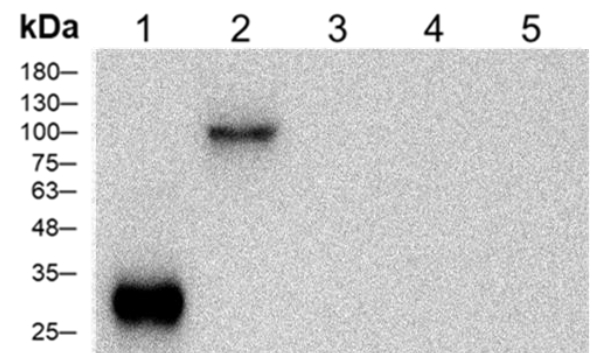
含 pH7.4 PBS 溶液。

ELISA Data



ELISA titration of Human anti-SARS- CoV-2 Spike mAb, Clone LGSV201

WB Data



Lane 1: SARS-CoV-2 S1-RBD
Lane 2: SARS-CoV-2 S1
Lane 3: SARS-CoV S1-RBD
Lane 4: SARS-CoV S1
Lane 5: MERS-CoV S1-RBD

Western blotting analysis of Mouse anti-SARS-CoV-2 Spike mAb, Clone LGSV201(1:5000)

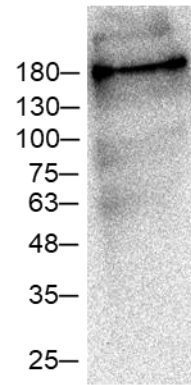
产品应用

产品应用 推荐稀释比及终浓度:

Application	Dilution factor	Final concentration
ELISA	1:5000-20000	0.05-0.2 µg/mL
WB	1:1000-5000	0.1-0.5 µg/mL
IFA	1:500-1000	1-2 µg/mL
FCAS	Assay dependent	N/A

Note: Application concentration may be various determined by the end user.

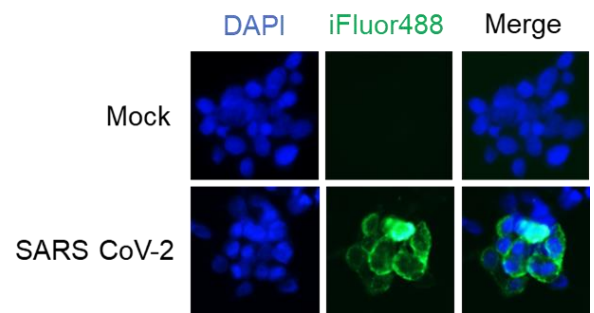
kDa



SARS-CoV-2 VLP

Western blotting analysis of Mouse anti-SARS-CoV-2 Spike mAb, Clone LGSV201(1:5000)

IFA Data



Immunofluorescence analysis of Mouse anti-SARS-CoV-2 Spike mAb, Clone LGSV201 (1:1000)

WB=Western Blot; IP=Immunoprecipitation; IF=Immunofluorescence; IHC=Immunohistochemistry;
 FACS=Fluorescence activated Cell Sorting; FA=Functional Assay

Chamot Biotechnology (Shanghai) Co., Ltd.

For Research Use Only